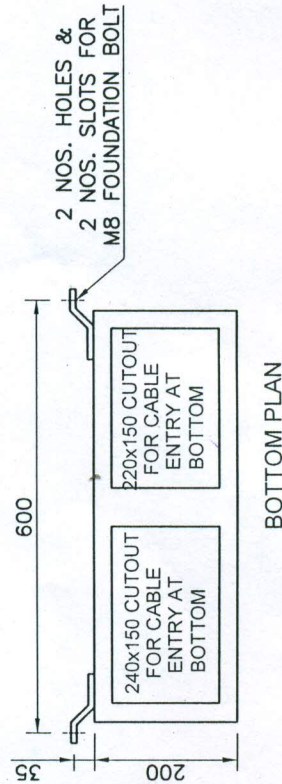
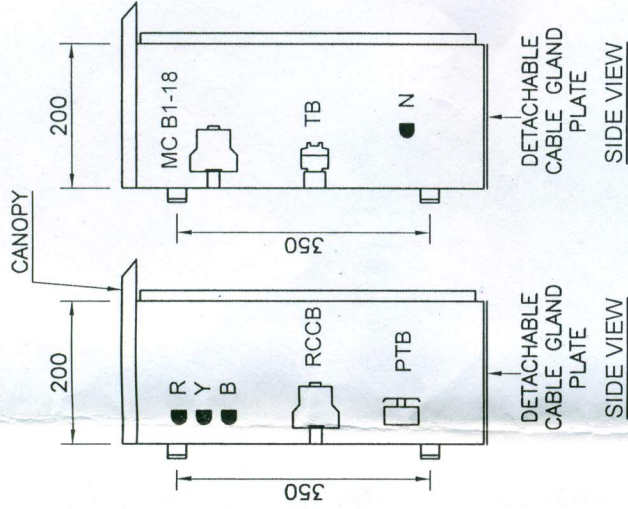
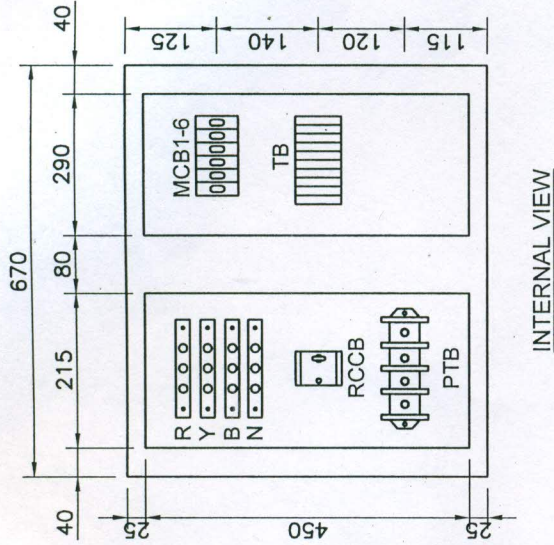
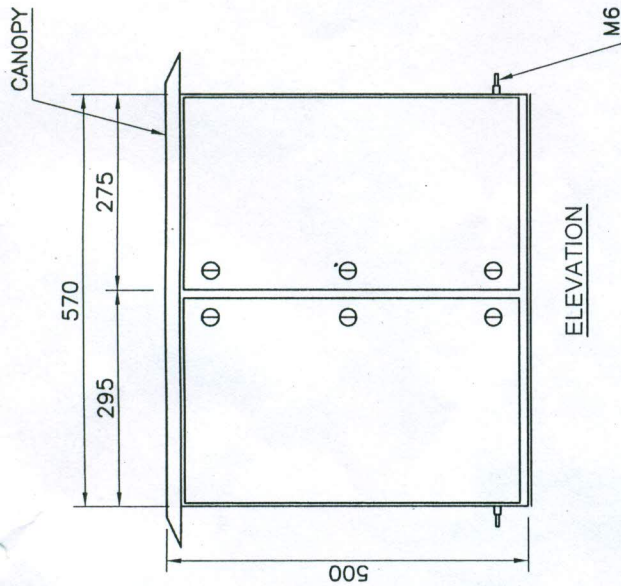


Noting for LDB

1. All Dimensions are in MM.
2. System : 415 V, 3 Phase, 4wire, 50 Hz AC Power supply
3. Paint shade : Pebble /Siemens Grey RAL -7032 (powder coated) MIN. 50 microns
4. Main Horizontal Bus bar : 63A, TPN , AL , 10KA For 1 sec
5. All Bus bar are Sleeved with colored PVC Heat Shrinkable sleeveings for full voltage excepting at joints
6. All Bus Bar Joints are applied with inhibiting oxidation compound
7. Terminals are supplied with Fasteners.
Suitable for crimping type Aluminum cable sockets as per size & No,s mentioned in the Single Line Diagram Please confirm the cable details .
8. Bus bar supports are DMC molded support
9. All Doors & covers shall be provided with Synthetic Gaskets (EPDM).
10. Sheets steel: 2.0 mm Thick.
11. Class of Protection to Enclosure : IP-52
12. Designation Labels shall be provided AT front .
13. Danger board shall be provided both at front.
14. All fasters provided are zinc Passivated (yellow).
15. All Doors shall be provided with padlocking facility and with captive fixing knobs
16. Aluminum bus bars are of E91E Grade.
17. Bus bar sizes are selected on the basis of 645 a/sq INCH. OR 1A/SQMM Current density
18. Maximum Temperature rise of the bus bars shall be limited to 40 degree centigrade over ambient of 45 degree centigrade.
19. Live Terminals shall be shrouded.
20. MCB shall be suitable for lighting load.
21. Wiring inside panel shall be done with single core 2.5 sqmm flexible copper conductor PVC insulated cable
22. COPPER Cable 1100 Volt grade should be used with Actual size of copper ring and pin type socket.
23. List of Acceptable Make of components.
 - A) MCCB/ RCCB/ELCB - Make -ABB, Siemens, L & T, Legrand.
 - B) MCB - - Make -ABB, Siemens ,L & T Legrand
 - C) Copper wire & cable - Make - CCI , POLYCAB, ANCHOR ,HAVELLS

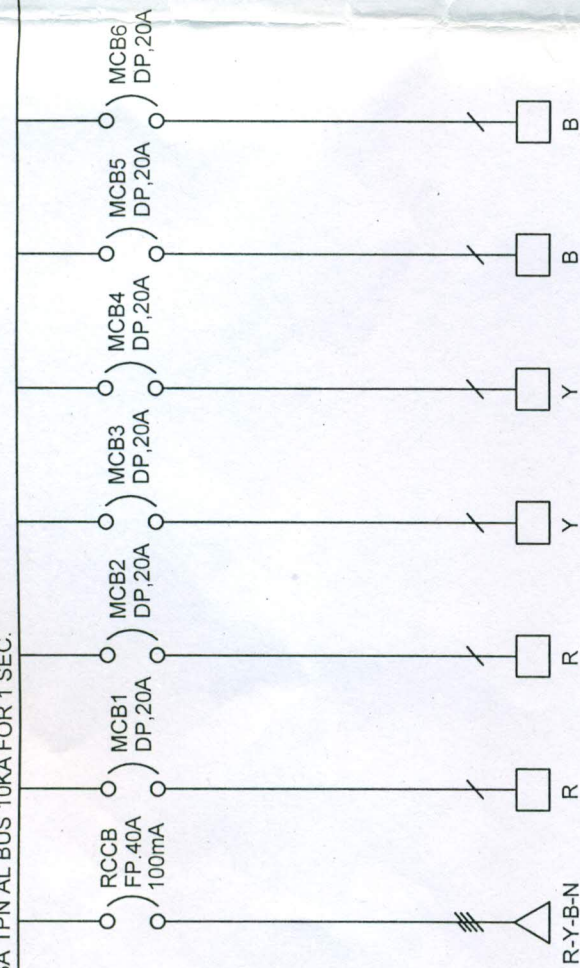
577



URANIUM CORPORATION OF INDIA LTD. TURAMDIH MILL
(A GOVT. OF INDIA ENTERPRISE, DEPT. OF ATOMIC ENERGY)

DRN.	Rajesh	20.10.16	TITLE
CHECKED	DP Singh		G.A. DRAWING OF LIGHTING PANEL
APPROVED	G. Dhar		FOR MAGNETITE PLANT
SCALE	NTS		
DIMENSIONS	IN MM		
DRG. NO.	MILL/TMD/ELECT.-123		REV.-0
			SHEET 1 OF 2

415V 63A TPN AL BUS 10KA FOR 1 SEC.



1	F.L.C./RATED CURRENT	40 A	20 A	20 A	20 A	20 A	20 A
2	POWER TERMINATIONS BUS LINK OR STUD TYPE TERMINAL SQ. MM. MAKE - ELMEX	50 (M8-4WAY)	16 (2 WAY)	16 (2 WAY)	16 (2 WAY)	16 (2 WAY)	16 (2 WAY)
3	OUTGOING CABLE SIZE SQ. MM AL/CU. (TENTATIVE)	INCOMING	1-2Cx2.5 CU.	1-2Cx2.5 CU.	1-2Cx2.5 CU.	1-2Cx2.5 CU.	1-2Cx2.5 CU.
4	DESIGNATION	INCOMER					



URANIUM CORPORATION OF INDIA LTD. TURAMDIH MILL
(A GOVT. OF INDIA ENTERPRISE DEPT. OF ATOMIC ENERGY)

DRN.	Rajesh	20.10.16	TITLE
------	--------	----------	-------

CHECKED DP Singh

APPROVED	G. Dhar
----------	---------

SCALE - NTS

DIMENSIONS IN MM

DRG. NO.- MILL/TMD/ELECT.-123	REV.- 0
-------------------------------	---------

SHEET 2 OF 2